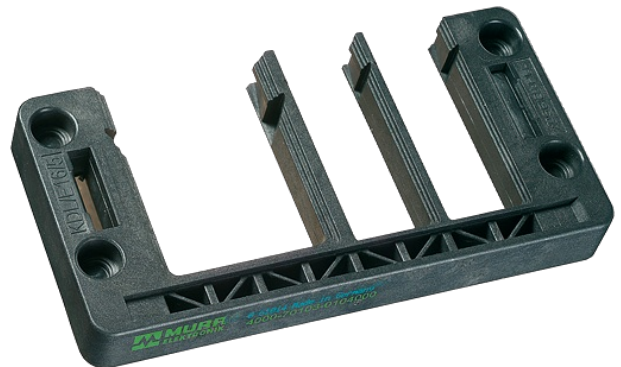


MODLINK MSDD CABLE ENTRY SYSTEM

KDL/E 16/8

Size 16
for 8 cables (0 large, 8 small)
For sale only in packing units

Illustration

Product may differ from Image

Approvals**General data**

Protection	IP54
Housing	Polyamide
Dimensions H×W×D	116×58×14 mm
Temperature range	-40...+80 °C

Commercial data

country of origin	DE
customs tariff number	39269097
EAN	4048879032148
eClass	27189217
Packaging unit	1